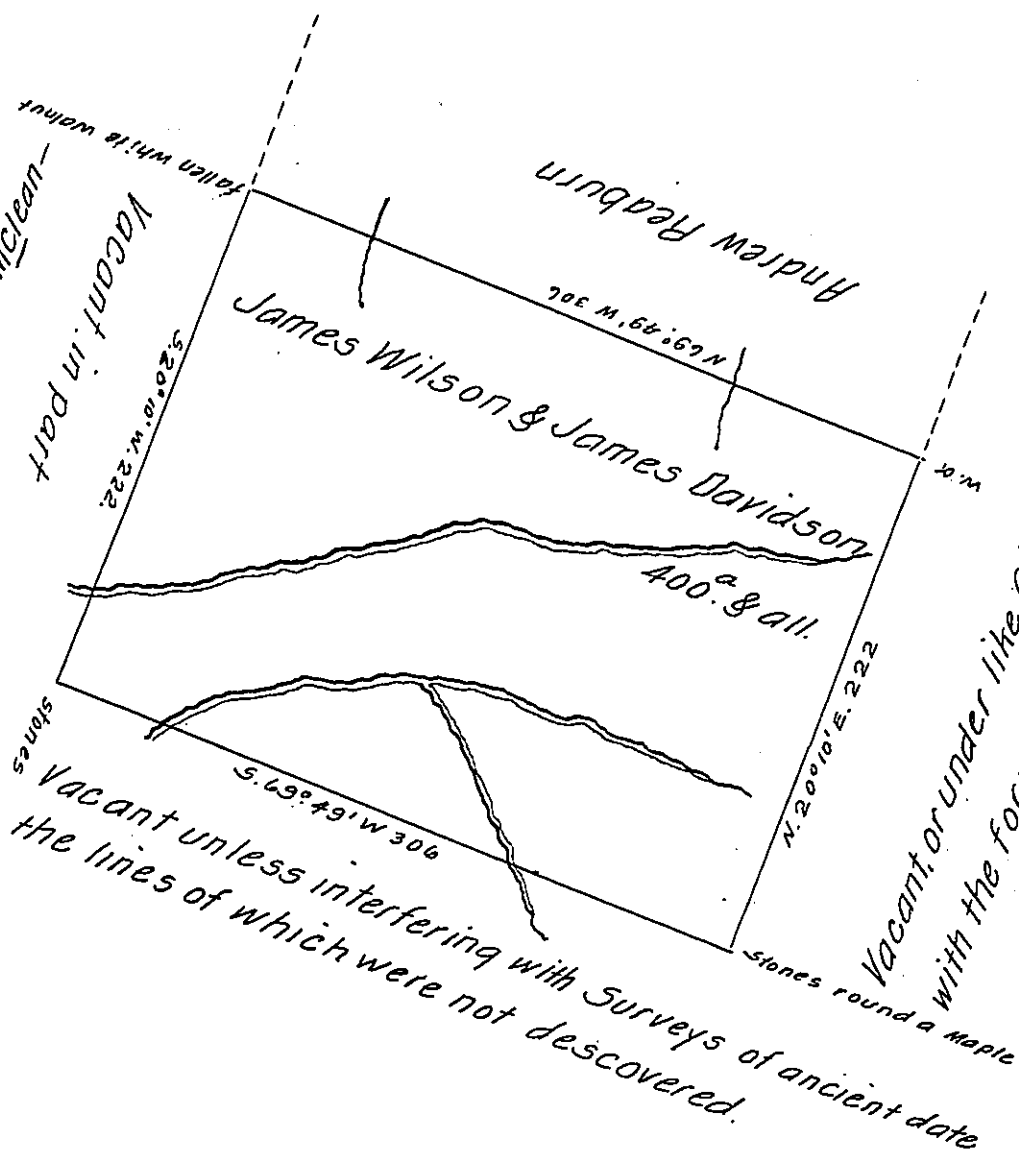


FORM NO. 1.

*This tract of Land is disputed by Jesse Blachen  
Patent not to issue until a determination of  
Court, as Suit is Instituted.  
S. C. E. S. C.*



Situate on the head Waters of Mill Creek in Salt Lick, <sup>Creek</sup> (formerly Bulls kin)  
Township Fayette County and Surveyed the 2<sup>d</sup> day of October 1800. In  
pursuance of a Warrant dated the 26<sup>th</sup> day of June 1788.

To Samuel Cochran Esquire }  
Surveyor General } p<sup>r</sup> Alexander McClean Deputy-

IN TESTIMONY that the above is a copy of the original remaining on file in  
the Department of Internal Affairs of Pennsylvania, made  
comformably to an Act of Assembly approved the 16th day of  
February 1833, I have hereunto set my hand and caused  
the Seal of said Department to be affixed at Harrisburg,  
this thirtieth day of October 1907.

*Alexander Howard*  
Secretary of Internal Affairs.